

# Gautam Satpathy

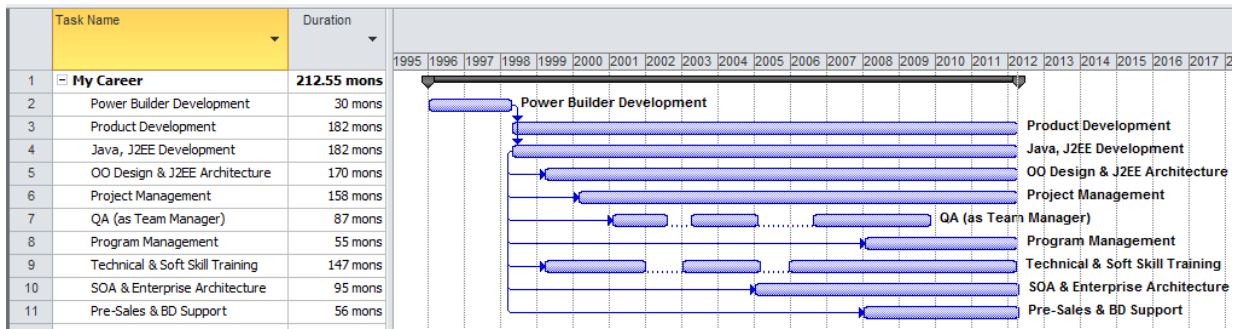
+91-99692-00724 (m),  
 +91-94407-01095 (m),  
 +91-40-2375-1611 (h)  
[gautam@satpathy.in](mailto:gautam@satpathy.in)  
[gautam@satpathy.org](mailto:gautam@satpathy.org)  
[gautam.satpathy@rolta.com](mailto:gautam.satpathy@rolta.com)  
<http://gautam.satpathy.org>

## Education

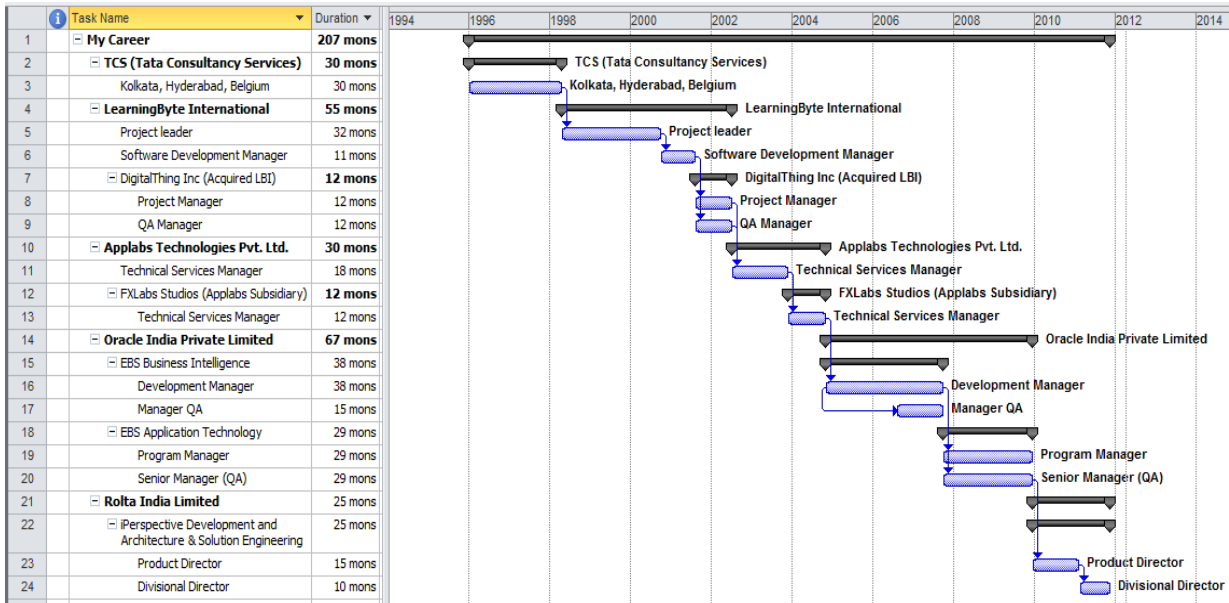
Indian Institute of Technology, Kharagpur, India

- BTech., Energy Engineering (Dept. of Electrical Engineering). Graduated in 1995.

## Career Summary



Click image to see [original on my web site](#). [PDF version](#). [MS Project version](#).



Click image to see [original on my web site](#). [PDF version](#). [MS Project version](#).

## Summary of Work Experience

**March 2010 Onwards – Rolta India Limited, Mumbai, India** <http://www.rolta.com/>  
**Product Director – Architecture & Solution Engineering | iPerspective Development**

\* As the **Divisional Director** in charge of the **Architecture & Solution Engineering** group I am responsible for working with Rolta’s client around the

world to help create the best of breed architectures and solutions to meet their present and future requirements. I also oversee similar efforts by other groups working in the Enterprise Architecture domain within Rolta to ensure that we deliver a consistent, robust, high quality & future proof architecture.

- \* The **Rolta iPerspective™ Enterprise Suite** is a patent pending Enterprise Solution spanning all aspects of the middleware solution area and provides a path breaking automated code generation engine that enables iPerspective to offer a “no coding required” solution to a wide variety of enterprise problems like development of complex, standards based, platform independent, and interoperable web services. I am responsible for the entire iPerspective Development team at Rolta HQ in Mumbai, India.

**November 2004 to March 2010 - Oracle India Private Limited, Hyderabad, India**

<http://www.oracle.com/>

**Program Manager –EBusiness Suite Application Technology**

**Senior Manager QA – EBusiness Suite Application Technology**

- \* Program Management for the entire **E-Business Suite Application Technology Group**. This includes the core Oracle Application Framework, AOL, Lifecycle Management, PIE and associated products from EBS ATG.
- \* Working within the ATG QA team as a Senior Manager in charge of QA for core technology components like SOA Integration Gateway, Oracle Workflow etc. Responsibilities include people management, project management, test estimation, test execution, automation, performance testing.

**Development Manager – Business Intelligence**

**Manager QA – Business Intelligence**

- \* Manage the **Business Intelligence (BIS) & Balanced Scorecard (BSC)** software development groups at Oracle IDC, Hyderabad. Responsibilities include people management, project management, estimation, delivery, design, development and testing.
- \* Manage the BIS & BSC QA Teams at Oracle IDC, Hyderabad. Responsibilities include people management, project management, test estimation, test execution, automation, performance testing.

**December 2003 to October 2004 - FXLabs Studios (A Division of AppLabs Technologies), Hyderabad, India**

<http://www.fxlabs.com/>

**Manager - Technical Services**

- \* Setup and manage the **Game Development Group** (Development & QA) at FXLabs Studios, a whole owned subsidiary of AppLabs Technologies. Responsibilities include people management, project management, client interaction, estimation, proposals, delivery, design, development and testing.
- \* Setup, develop and foster the **AppLabs Performance Test Practice (APTP)**; a new service offering from AppLabs Technologies. The APTP was a strategic initiative for 2004 and I was responsible for putting together the team & processes.

**August 2002 to November 2003 - AppLabs Technologies (A CMM Level 5 Company), Hyderabad, India**

<http://www.applabs.com/>

**Manager - Technical Services**

- \* I managed the **Software Development Group** at AppLabs Technologies. Responsibilities included people management, project management, client management (account management), estimation, proposals, delivery, and process

implementation. During my tenure, Applabs Technologies was assessed at CMM level 5 in September 2003.

### **2001 - 2002, DigitalThink (India), Hyderabad, India**

(Acquired LearningByte, previous employer)

<http://www.digitalthink.com/>

#### **Project Manager**

- \* I managed the development and implementation of DigitalThink's technology products. These include web based content management systems, Hosted Learning Communities and desktop software based on Java and related web technologies.
- \* Management for new products and maintenance releases
- \* Rescue mode Project Management for projects in trouble
- \* I helped the software development team improve their development methodology.

#### **Manager - Quality Engineering (Technology)**

- \* Built the Quality Engineering (Technology) team at DigitalThink India
- \* I helped the team understand, design and implement processes for testing web based and desktop software. I also helped build proficiency in white box and load testing. This included training the team in JUnit (unit level white box), Cactus (white box, in-container integration testing) and HTTPUnit (functionality testing).
- \* I helped the team mature their relationship with development teams and management

### **1998 - 2001, LearningByte International, Hyderabad, India**

<http://www.digitalthink.com/> (DigitalThink acquired LearningByte in August 2001)

#### **Project Manager (2000 - 2001)**

- \* I managed the software development team at LearningByte.
- \* Helped train and support LearningByte's elearning course production teams across three locations (Hyderabad, Bangalore & Minneapolis)
- \* I managed the development, implementation and support of four generations of LearningByte's technology products for elearning. These include server side software called CAS, to serve elearning content and track user data. CAS used Java Servlet/JSP and related web technologies like XML & XSL.
- \* Helped other domains (Instructional Design, Visual Design, Production etc) understand and use the technologies we had built

#### **Project Leader (1998 - 1999)**

- \* Designed and built LearningByte's first generation software simulation courses using Java applets
- \* Designed and built LearningByte's content authoring software called LearningByte Builder (LBB). LBB was built using client side Java (Swing) and XML/XSL technologies.

### **1995 - 1998, Tata Consultancy Services, Kolkata & Hyderabad, India**

<http://www.tcs.com/>

#### **Senior Software Engineer**

- \* Software design, development & testing
- \* Data collection and reporting system for the Government of Belgium. On site at CIPAL office in Geel, Belgium

#### **Software Engineer**

- \* Software development, testing & end user training
- \* Management information system for the Andhra Pradesh Forest Department.

## **Career Highlights**

## Process

- \* [CMM Level 5 Assessment at Applabs Technologies](#) (2003 - 2004): As the senior manager in charge of the software development team, I was responsible for working with SEPG and the project teams to design and implement the Organizational Standard Software Process (OSSP) as part of the CMM level 5 assessments. I was part of the core group that trained project leaders and other participants. As the senior manager, I was responsible for overseeing all implementation efforts. I was also a part of the assessed group.
  - \* Role: Senior Manager

## Products

- [Rolta iPerspective™ Enterprise Suite](#) (2010 onwards): Rolta's iPerspective product was conceived in early 2002 as a solution to the problem of building standards compliant web services rapidly. The problems are many fold – proliferation of technologies and operating systems, complexity and a humongous learning curve, disparity of security solutions required for enterprise solutions to name but a few. iPerspective was originally designed to solve these and other issues by giving the developer an easy to use tool that would require no coding but be template driven to manage the inherent complexities. In early 2010 I took over the development team based in Rolta HQ at Mumbai. My first step was to revamp the development team and recruit the personnel required to support a world class development effort. I also saw the hereto unexplored opportunities offered by the iPerspective technology stack and expanded the product offering to a full-fledged enterprise suite that offers a whole range of products to address some of the biggest challenges in the enterprise middle ware area.
  - \* Role: Product Director
- [AppLabs Performance Test Practice and the AppLabs Performance Test Tool Suite](#) (2003 – 2004): During the corporate strategic planning sessions in mid 2003, I proposed the idea of offering performance test services in addition to our QA and software development service offerings. My vision document was accepted in-toto and I was charged with the task of setting up such a practice. To do this, I first setup a software development team to build up a suite of tools that would enable us to test web applications as well as client-server systems. The biggest requirement for this tool suite was to leverage existing hardware infrastructure and hence the ability to use desktop PCs to generate virtual user load over the LAN was my key focus area. We recently achieved a target of 25,000 virtual users using 25 P4 class desktop PCs with 512 Mb of RAM each. Secondly, I enlisted a couple of QA engineers to help me draft a tool agnostic performance testing process. Today the tools and processes are in place and performance testing has become a regular AppLabs service offering.
  - \* Role: Evangelist, Project Manager, Architect and Critic
- [Innaphase Newton](#) (2003 – 2004): Innaphase Corporation is the leading supplier of LIMS solutions dedicated to the pharmaceutical industry. Newton™ is the first LIMS Solution designed from the outset for the pharmaceutical testing environment. It is designed to provide a single LIMS solution for analytical development and quality control. Newton LIMS is developed using a thin-client, n-tier architecture, and XML, with an Oracle database. Newton is built on Java and XML technologies. This product was built by teams from Innaphase and AppLabs. My role was that of Project Manager, architect and client liaison for the AppLabs team.
  - \* Role: Project Manager
- [GHX WebConnect](#) (2003 – 2004): Global Healthcare Exchange (GHX) brings together hospitals, manufacturers and wholesalers to create value and measurable benefits for all participants in the healthcare supply chain. WebConnect is a browser based product for smaller hospital's that don't have large purchasing

systems; hospitals are able to search on supplier catalogues and create and send purchase orders from a browser; in addition, hospitals receive confirmations and order status information from suppliers. WebConnect is built on J2EE technologies and is fully internationalized and localized for locales across Europe and North America. My role was that of Project Manager, architect and client liaison for the AppLabs team.

\* Role: Project Manager

- [MarketAxess BondTicker](#) (2002 – 2004): A J2EE based web application used by MarketAxess to disseminate bond-trading data based on NASD's TRACE feed. MarketAxess' Corporate BondTicker™ combines the National Association of Securities Dealers (NASD) TRACE data with MarketAxess tools to provide professional market participants with a comprehensive set of corporate bond price information. I designed and helped build the system before handing over the Project Leader role and donning the Project Manager mantle after the first version went live in early 2003. Since then I have managed 5 major releases as the PM.
  - \* Role: Architect/Lead Designer, Project Leader and Project Manager
- \* [LearningByte Builder \(LBB\)](#) (1998 – 2002): A desktop application that provided a WYSIWYG environment for elearning content authoring. Used XML for data representation with final output as cross browser HTML via XSLT transformation. LBB supported pre-fabricated templates; simple web pages to complex web based GUI simulations. Initially developed using Java 1.1.6 and Swing 1.0; later migrated to Java 1.2 and Swing 1.1. This product revolutionized the content authoring process at LearningByte. The biggest success story involves the conversion of 260 hours of video based training to internet enabled formats in 3 calendar months with a 20 member team.
  - \* Role: Architect/Lead Designer, Team Leader and later Project & Product Manager
- \* [LearningByte's GUI Simulation Engine](#) (1998 – 2002): A cross browser DHTML solution for simulating user interfaces; used for graphical and character based user interfaces. Also used for simulating devices like medical equipment etc. The GUI Simulation Engine was a set of XSL Templates used by LBB to produce DHTML pages.
  - \* Role: Product Architect and later Project Manager
- \* [LearningByte's Content Application Server \(CAS\)](#) (2000 – 2002): A Java Servlet/JSP based product used to host elearning courses and track user activity. CAS used XML with XSLT transformation to produce DHTML web pages on demand. It could also serve pre-packaged web pages. CAS could be configured to use XML or a RDBMS for data storage. CAS provided a plug-in architecture for third party "connectors" to content and learning management systems. CAS had a small footprint and could be embedded into desktop applications or used to power a learning site with thousands of users.
  - \* Role: Product Architect and later Project Manager
- \* [Hosted Learning Communities \(HLCs\)](#) (2000 – 2002): Custom made online elearning communities, with support for an arbitrary number of levels and detailed reporting; built using Java Servlets and JSPs. HLCs could be customized to suit the client's corporate structure.
  - \* Role: Project Manager
- \* [DT-Revise](#) (2000 – 2002): DT-Revise is a web based content maintenance system. It uses Java Servlets & JSPs, with Oracle as the database. DT-Revise provides a controlled view of hosted elearning course content and allows the user to edit HTML pages, change media elements, preview changes, revert to earlier versions and publish changes to the live server. DT-Revise integrates with DigitalThink's Seibel based support system to help track usage of the system.
  - \* Role: Project Manager

---



### **Contact Details**

Postal Address : Flat 235/236, Kadambari, JVPD Scheme, Juhu, Mumbai, Maharashtra – 400042

Phone : +91 – 22 – 2671-0453 (home), +91 – 99692-00724 (mobile), +91 – 94407-01095 (mobile)

Email : [gautam@satpathy.in](mailto:gautam@satpathy.in), [gautam@satpathy.org](mailto:gautam@satpathy.org)

Website : [www.satpathy.in](http://www.satpathy.in), [gautam.satpathy.org](http://gautam.satpathy.org)

Blog : (Personal) [What Ho! - what.ho.satpathy.org](http://what.ho.satpathy.org)  
(Professional) [Convergence – convergence.satpathy.org](http://convergence.satpathy.org)